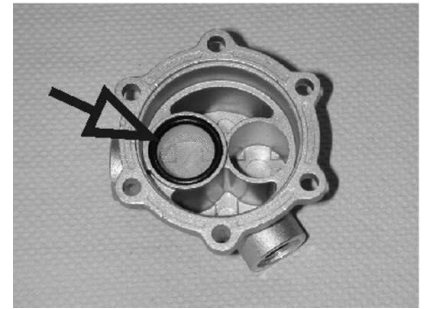
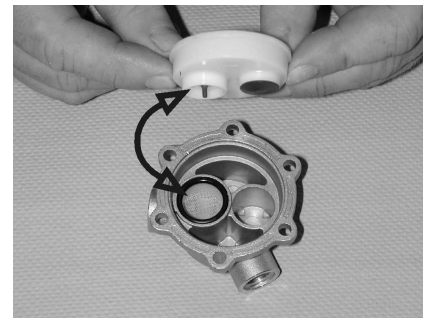


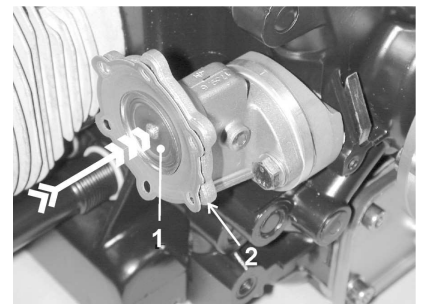
Remove o-ring and strainer from top of pump.



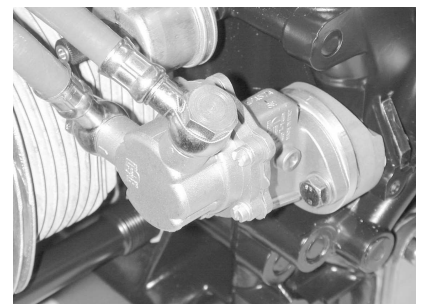
Clean housing. Insert strainer and new o-ring. Insert valve assy until flush with the flange of the cover.



Rotate crankshaft until the diaphragm of the fuel pump is in the lowest position. The plate of the diaphragm (1) is flush with the fuel pump housing (2).



Attach top of the fuel pump and tighten screws. Reassemble fuel hoses with new gasket washers. Tighten hollow bolts and secure with safety wire. Perform test run and check for leaks.



The inspection intervals are detailed in the operating and maintenance manual.

Source: Limbach Flugmotoren GmbH & Co. KG, Kotthausener Str. 5, D-53639 Königswinter, Germany
Tel. +49/2244/9201-0, Fax: +49/2244/9201-30, E-Mail: sales@limflug.de www.limflug.de

Approval: This Technical Bulletin was approved according to the procedures of the EASA Design Organisation
No.: EASA.21J.270

Note: This document has been translated to the best of our knowledge. In case of doubt however only the German original shall be considered authoritative.

Subject: Fuel pump

Affected engine models: All engine models:

L 1700
L 2000

Background information: Production of previously used APG fuel pumps discontinued.

Priority: None

Compliance: The previously used fuel pumps are replaced with BCD manufactured pumps. See the cross-reference table for old and new part numbers.

Engine Type	Old part number	New part number
L 1700 EA, ED L 2000 EA, DA	170.090.001.000	170.090.014.000
L 1700 E0, EB, EC L 2000 E0, EB, EC	170.090.003.000	170.090.013.000

The new type fuel pump may only be used together with insulating flange P/N: 170.091.131.000



previously used pump



new pump

Service / Inspection: To inspect the fuel strainer remove fuel lines. Disassemble top of the fuel pump (6 screws). Collect any fuel dripping from the pump.

Disassemble valve assy from top of fuel pump with a suitable tool.

